



WhiteHEAT/USB 



Installation

WhiteHEAT/USB

Multi-port Serial Adapter for USB

Installation Guide

Contact Information:

Connect Tech Inc.
42 Arrow Road
Guelph, Ontario, Canada N1K 1S6

Tel: 519-836-1291 (International)
800-426-8979 (Canada & USA)

Fax: 519-836-4878

Email: sales@connecttech.com (sales)
support@connecttech.com (support)

URL: www.connecttech.com



WhiteHEAT/USB

Introduction

Connect Tech Inc. proudly presents the WhiteHEAT/USB, a high-speed multi-port communications adapter for Universal Serial Bus (USB) compatible computers. It provides you with four high performance serial ports with baud rates up to 460.8 Kbps that are compatible with any standard Windows serial communications application.

WhiteHEAT/USB is fully USB 1.1 compliant. You simply connect it to an available USB port on your computer and the hardware setup is complete. It eliminates the need to open the computer to install an adapter. It is hot swappable with Plug and Play installation - no jumpers or switches to set.

The WhiteHEAT/USB is an ideal solution for multi-port serial communications in applications such as Point of Sale; Industrial Process Control; Data/Telecommunications and Office Automation. It allows easy Plug and Play attachment of peripherals such as barcode scanners, receipt printers, card readers, testing and monitoring equipment, modems, printers and any other device requiring serial communications.

Features

- Four high performance Plug and Play RS-232 ports.
- Baud rates up to 460.8 Kbps using 16C654 Quad UARTs.
- Each port can be configured independently (baud rate, parity, data and stop bits).
- High speed host connection via the Universal Serial Bus.
- USB 1.1 compliant - hot swappable with Plug and Play installation - no jumpers or switches to set.
- Windows 95/98/Me/2000/XP/CE and Linux compatible.

Your WhiteHEAT/USB product consists of the following components:

- WhiteHEAT/USB communication module
- USB cable, Type A to Type B, two metres long
- WhiteHEAT/USB device drivers

Software Installation

The WhiteHEAT/USB provides support for Windows 95/98/Me/2000/XP/CE and Linux. Please refer to the **readme.txt** files found in the appropriate directories on the WhiteHEAT/USB device driver diskette. These files contain technical tips or release notes concerning installation and configuration of the device driver. For further information concerning software installation of WhiteHEAT/USB products please visit the Connect Tech website at www.connecttech.com.

If you are interested in a device driver for an operating system not listed please contact the Connect Tech Sales Department.



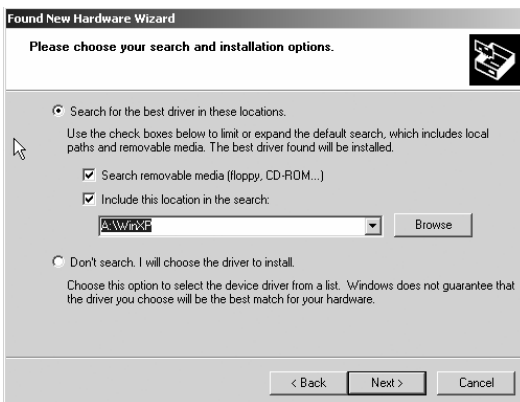
Windows XP Installation

The following instructions outline how to install the WhiteHEAT/USB to a computer running Windows XP. If you did not receive the Windows XP driver on your WhiteHEAT/USB driver diskette, please go to the **Download Zone** of the **Support Center** on the Connect Tech website for product manuals, installation guides, device driver software, diagnostic utilities and updates.

1. After connecting the supplied USB cable to the USB ports on your computer system and the WhiteHEAT/USB, the **Found New Hardware Wizard** will appear.



2. Insert the WhiteHEAT/USB driver diskette into floppy disk drive A
3. Choose what you want the wizard to do by selecting **Install from a list or specific location (Advanced)**. Select **Next**.

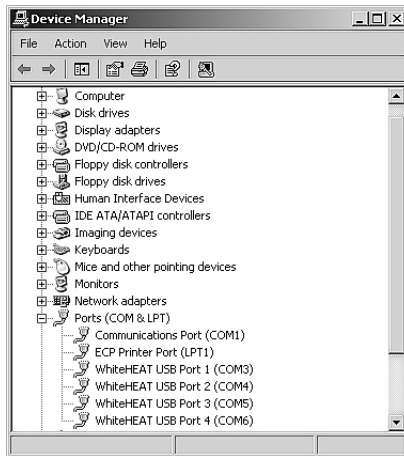




WhiteHEAT/USB B

4. Choose **Select removable media (floppy, CD-ROM)** and **Include this location in the search** and type **A:\WinXP**. Now select **Finish**.
5. The **Found New Hardware Wizard** will repeat steps 1 through 4 to complete the installation of the WhiteHEAT/USB serial ports. Please follow the on-screen instructions
6. Installation is complete when no more dialogue boxes appear.

You can now verify the presence of WhiteHEAT/USB serial ports in your system by going to **Start - Control Panel – System Properties – Hardware - Device Manager - Ports**.



Status LEDs

When you connect the WhiteHEAT/USB to a computer system that is already powered on, the LED labeled **USB** will blink, confirming the connection of the WhiteHEAT/USB to the USB port.

Whenever you connect a communication device to a WhiteHEAT/USB serial port, the corresponding LED will light for that port indicating a connection between the WhiteHEAT/USB and the communication device.

When there is data communications between the WhiteHEAT/USB and a connected device, the corresponding port LED and the LED labeled **USB** will blink indicating data traffic.

Note:

Please contact Connect Tech Technical Support if you require additional information concerning the installation or operation of your WhiteHEAT/USB.



WhiteHEAT/USB B

Copyright Notice

The information contained in this document is subject to change without notice. Connect Tech shall not be liable for errors contained herein or for incidental consequential damages in connection with the furnishing, performance, or use of this material. This document contains proprietary information that is protected by copyright. All rights are reserved. No part of this document may be photocopied, reproduced, or translated to another language without the prior written consent of Connect Tech, Inc.

Copyright © 1998, 1999, 2000, 2003 by Connect Tech, Inc.

Trademark Acknowledgment

Connect Tech, Inc. acknowledges all trademarks, registered trademarks and/or copyrights referred to in this document as the property of their respective owners.

Not listing all possible trademarks or copyright acknowledgments does not constitute a lack of acknowledgment to the rightful owners of the trademarks and copyrights mentioned in this document.

Specifications	WhiteHEAT/USB			
Number of ports:	4			
Electrical Interface	RS-232			
Connectors	Four DB-9 male (serial ports) One USB Type B connector (host connection)			
Control Signals/Pinouts	Signal	Pin #	Signal Direction	DB-9 Male Connector
	DCD	1	input	
	RxD	2	input	
	TxD	3	output	
	DTR	4	output	
	SG	5	signal gnd.	
	DSR	6	input	
	RTS	7	output	
	CTS	8	input	
	RI	9	input	
Baud Rates	50 – 460.8 Kbps			
ESD protection	IEC 1000-4-2 compliant			
Bus	USB 1.1 bus compatible			
Regulatory Approvals	FCC Class A		EN 61000-4-4	
	ICES-003		EN 61000-4-5	
	EN 500082.1:1997		EN 61000-4-6	
	EN 55022 Class A		EN 61000-4-8	
	EN 61000-4-2		EN 61000-4-11	
	EN 61000-4-3			
System Requirements	An available USB port on your system			
Part Number	WH4A01			
Note: for more detailed specifications please go to Connect Tech website address www.connecttech.com				



WhiteHEAT/USB

Class A Computing Device

WhiteHEAT/USB

Connect Tech Inc. declares that the product(s) covered by the contents of this manual have been tested and found compliant with the below listed standards as required by the Electromagnetic Compatibility (EMC) Directive for General Immunity Compliance, EN 50 0082.1:1997

EN 55022 Conducted and Radiated emissions
CISPR 22 Class A

EN 55024 Immunity to Disturbances

EN 61000-4-2		EN 61000-4-6
EN 61000-4-3		IEC 61000-4-8
EN 61000-4-5		IEC 61000-4-11

The above satisfy the requirements of:

USA: FCC – CFR47, Part 15, part 2

Canada: ICES-003

Europe EMC Directive

Japan: VCCI

Australia/New Zealand: AS/NZS



Rod Doré
Manager of Engineering

Dave J. Worthen, P. Eng.
President

Limited Lifetime Warranty

Connect Tech Inc. provides a Lifetime Warranty for all Connect Tech Inc. hardware products and warrants that it is to be in good working order for the product's lifetime from the date of purchase from Connect Tech Inc. or an authorized Connect Tech Inc. business partner. Should this product, in Connect Tech Inc.'s opinion, fail to be in good working order during the warranty period, Connect Tech Inc. will, at its option, repair or replace this product at no charge, provided that the product has not been subjected to abuse, misuse, accident, disaster or non-Connect Tech Inc. authorized modification or repair. You may obtain warranty service by delivering this product to an authorized Connect Tech Inc. business partner or to Connect Tech Inc. along with proof of purchase. Product returned to Connect Tech Inc. must be pre-authorized by Connect Tech Inc. with an RMA (Return Material Authorization) number marked on the outside of the package and sent prepaid, insured and packaged for safe shipment. Connect Tech Inc. will return this product by prepaid ground shipment service. The Connect Tech Inc. Lifetime Warranty is defined as the serviceable life of the product. This is defined as the period during which all components are available. Should the product prove to be irreparable, Connect Tech Inc. reserves the right to substitute an equivalent product if available or to retract Lifetime Warranty if no replacement is available.

The above warranty is the only warranty authorized by Connect Tech Inc. The above warranty applies to products sold on or after January 1, 2003. **NOTE: Under no circumstances will Connect Tech Inc. be liable in any way for damages, including any lost profits, lost savings or other incidental or consequential damages arising out of the use of, or inability to use, such product.**

RMA Procedure

Connect Tech products requiring warranty or non-warranty repairs need a Return Merchandise Authorization (RMA) Number. To obtain a RMA Number please contact:

Connect Tech Inc.
c/o Technical Support
42 Arrow Road
Guelph, Ontario
Canada N1K 1S6

Tel: 519-836-1291 (International)
800-426-8979 (Canada & USA)
Fax: 519-836-4878
Email: support@connecttech.com
URL: www.connecttech.com

Include with the product, proof of purchase (including date of purchase), a description of the problem and the RMA number. Clearly display the RMA number on the external packaging. Please refer to the Limited Lifetime Warranty for further restrictions or requirements.

Note:

1. Please pack the item for repair securely and ship it prepaid and insured. Connect Tech is not liable for damage or loss to the product due to shipping.
2. Connect Tech will not accept items for repair without an RMA number.
3. Connect Tech will not accept items for repair shipped freight collect.